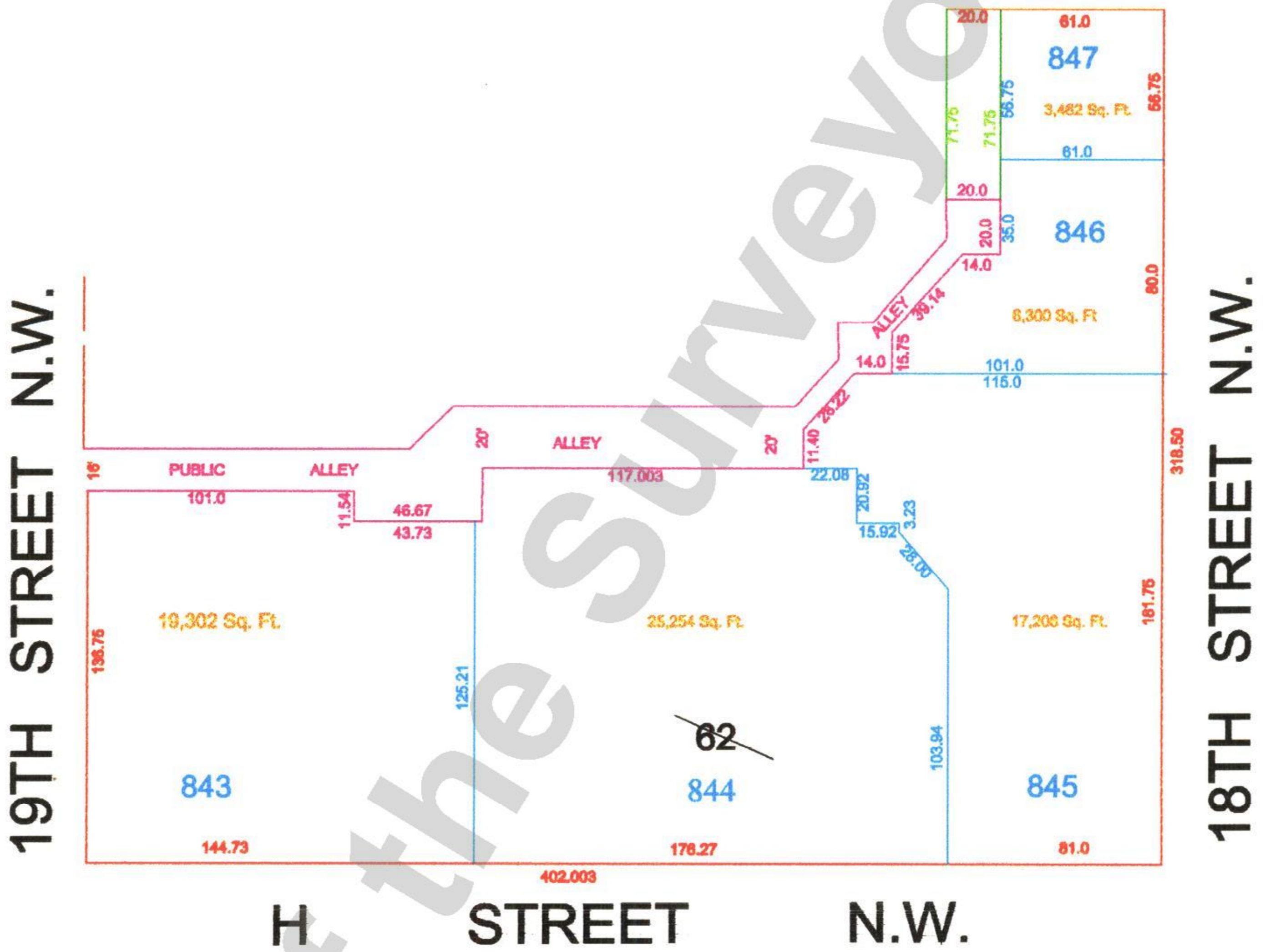
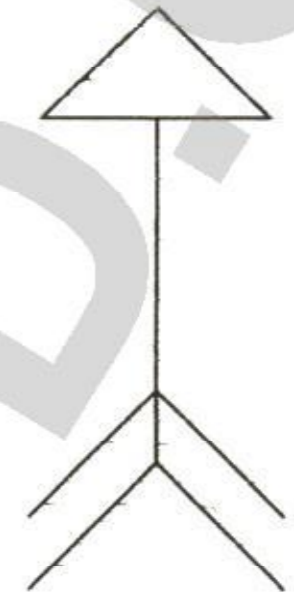


OFFICE OF TAX AND REVENUE
ASSESSMENT DIVISION



ASSESSMENT AND TAXATION PLAT
SQUARE 105



R.E. Brown D.O. 73375 2/5/04
 Draftsman Reference Date

Scale, 1 inch 20 ft.

The Office of Surveyor of the District of Columbia shall admit this plat to record under the provisions of Chapter 7 of Title 47, District of Columbia Code, Designation of Real Property for Assessment and Taxation, and for other purposes.

Maryo Kurt Davis
 Chief Assessor, Office of Tax and Revenue